

Construction

Mogensen Tubular Conveyors are manufactured in a wide range of diameters and lengths to suit your requirements, robustly constructed from good quality mild or stainless steel plate or tube. Inlets and outlets can be flanged to facilitate cleaning etc. Maximum length of tubes are 6.0 mtrs but units can be linked together to convey over greater distances and can be either base mounted or suspended.



Power Units

Screens are powered by dustproof and weatherproof electric out-of-balance INVICTA vibrators, fitted with large roller bearings and totally enclosed, to provide trouble-free drive for intermittent and continuously rated duties.

Flow Rates

Other feed rates than the maximum may be achieved in fixed steps by adjusting the out of balance weights on the vibrator motors, which are provided with a graduated label for setting purposes. For applications that require frequent adjustment of the feed rate an electronic variable feed control panel can be provide.

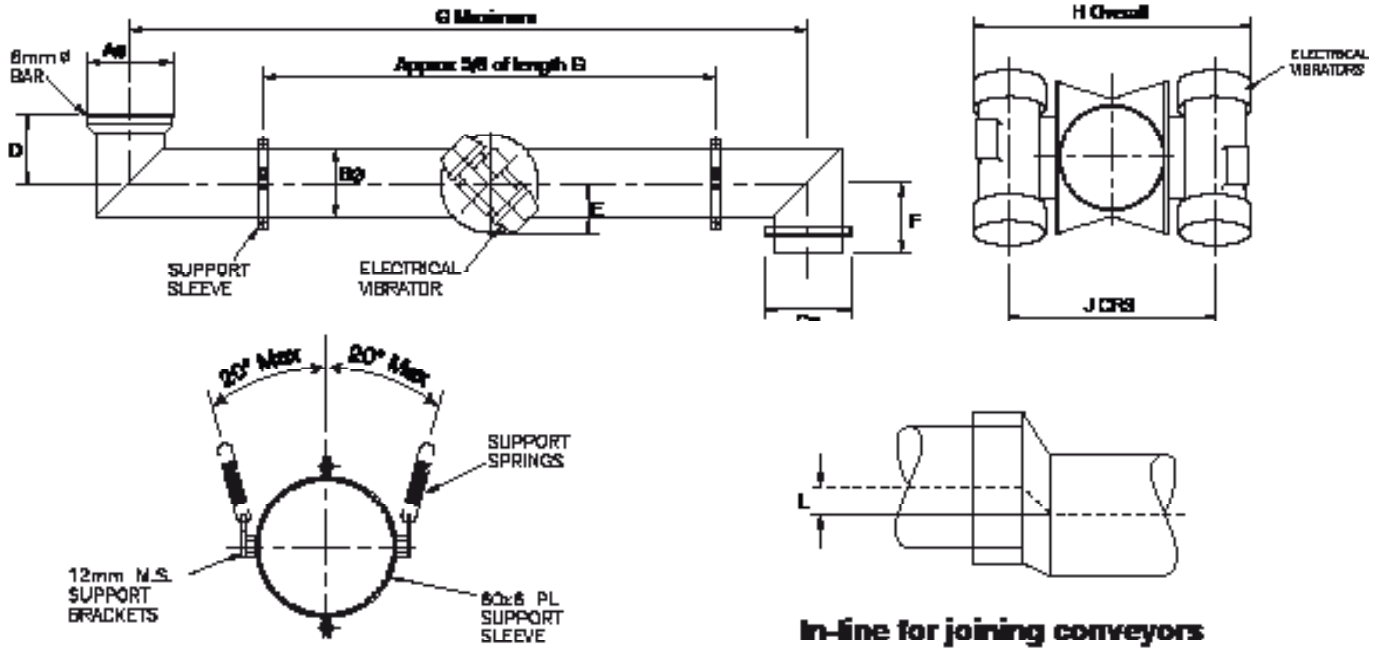
Motor Control Systems

A twin motor starter, incorporating dual overload protection to shut down the feeder in the event of one motor malfunctioning, can be supplied at extra cost, also a phase reversal braking starter that will stop the feeder quickly to avoid the problems when machines go through resonance on shut down, and avoid damage to the machine and support structure

Mountings and Installation

When installed the conveyor it should be 50mm clear of stationary plant and steelwork wherever possible. Additions to the tube in the form of hoppers, chutes, baffles etc, should be discouraged in favour of statically mounted methods. Extra parts attached to the tube structures result in less efficient conveying due to the reduced amplitude of vibration, and possible damage to the structure due to resonance.

Dimensions & Weights



Alternative Mounting

Vibratory Tubular Conveyors

Tubular Conveyors	A	B	C	D	E	F	G	H	J	K	L	Weight (Kg)
TC 200/2000	250	200	250	200	265	290	2000	754	346	282	50	67
TC 200/3000	250	200	250	200	265	290	3000	754	346	282	50	83
TC 200/4000	250	200	250	200	265	290	4000	754	372	282	50	99
TC 250/2000	315	250	315	235	315	315	2000	880	396	332	60	84
TC 250/4000	315	250	315	235	315	315	4000	880	422	332	60	124
TC 315/3000	400	315	400	280	315	350	3000	945	461	397	70	139
TC 315/5500	400	315	400	280	315	350	5500	945	487	397	70	199
TC 400/2500	500	406	500	350	315	390	2500	1040	572	482	80	184
TC 400/6000	500	406	500	350	315	390	6000	1040	572	482	80	359
TC 500/3500	600	508	600	410	325	450	3500	1140	680	592	90	307
TC 500/5000	600	508	600	410	325	450	5000	1140	680	592	90	430
TC 500/6000	600	508	600	410	325	450	6000	1140	680	592	90	512
TC 600/3000	700	609	700	460	375	500	3000	1240	780	692	100	290
TC 600/4000	700	609	700	460	375	500	4000	1240	780	692	100	380
TC 600/6000	700	609	700	460	375	2390	6000	1240	780	692	100	560